

PUC-Campinas EESC USP Comitês PCJ

APRESENTAM:

SUSTENTARE & WIPIS2023

WORKSHOP INTERNACIONAL

SUSTENTABILIDADE, INDICADORES E GESTÃO
DE RECURSOS HÍDRICOS



22/11 evento
23/11 100% online
24/11 e gratuito

ESTIMATION AND MAPPING OF RUNOFF POTENTIAL UNDER DIFFERENT LAND USE AND LAND COVER CONDITIONS IN THE SEMIARID REGION OF BRAZIL: A CASE STUDY IN THE RIACHO DA CONSULTA WATERSHED, BAHIA, BRAZIL

Izaias de Souza Silva, Universidade Federal de Goiás,

izaias@discente.ufg.br

Jaqueline Pereira Evangelista, Universidade de Brasília,

jaqueline.evangelista@aluno.unb.br

Gabriela Alves Carreiro, Instituto Nacional de Pesquisas Espaciais,

gabriela.carreiro@inpe.br

Ulisses Costa de Oliveira, Universidade Federal do Ceará,

ucoliveira@gmail.com

Eduardo Cesar da Silva, Empresa Brasileira de Pesquisa Agropecuária,

Eduardo.silva@embrapa.br

Abstract

The Curve Number (CN) method is one of the most widely used methods for estimating runoff potential from rainfall events in watershed. In this study, the Curve Number parameter was estimated, spatialized, analyzed and discussed under different land cover and land use conditions. The study area is the Riacho da Consulta watershed, located in the state of Bahia, Semi-arid region of Brazil. Land use and land cover data, slope data and spatial data about pedology of the study area were used. The results showed that the Riacho da Consulta watershed has an average CN of 79, evidencing a watershed with high runoff potential, where areas of very high CN are strongly related to land cover and land use, highlighting the importance of conservation practices.

Key words: Curve Number, Infiltration, Water Flows, Land Use and Land Cover, Watershed.

1. Introduction

The knowledge of runoff conditions is of great importance for decision-making in river basins. In the context of global climate change, this knowledge is essential to support and substantiate the formulation and implementation of public policies with an emphasis on the management and conservation of ecosystems (AVANIZ et al., 2009; SANTOS et al., 2007). From this perspective, it can be seen that, in both national and international literature, the Curve Number method is one of the most widely used to estimate potential runoff conditions from precipitation events, given the different land cover and land use scenarios, as well as the different types land use and land cover that characterize landscapes (LAL et al., 2019).



The Curve Number method, also known in the literature as the CN Method, was developed and presented by Soil Conservation Service (SCS) of the United States of America (USA) in the 1930s, based on a great need for knowledge of hydrological processes, especially those associated with surface runoff and water storage capacity in small and medium-sized watersheds. In this context, the purpose was precisely to support managers and decision-makers in the conservation of soil and water resources. This method, characterized as being conceptual and empirical, is relatively simple to implement with just one CN parameter, making it the most widely used method for calculating runoff potential based on rainfall events (HAWKINS, 1993; ARAÚJO NETO et al., 2012; CARVALHO e RODRIGUES, 2021; OLIVEIRA et al., 2022).

According to Anjinho et al. (2018), the dimensionless parameter CN ranges from 0 to 100, based on the assumption that values close to one hundred (100) represent the boundary conditions of a completely impermeable watershed, in other words, a watershed with an equal and/or practically zero water retention rate. On the other hand, the assumption for values close to zero (0) is that these areas indicate the opposite conditions: a high rate of water retention in the respective watershed, thus representing very permeable watersheds, understood that surface runoff is significantly low, regardless of the amount of accumulated rainfall recorded. Specifically, the methodology it is used to convert the volume of precipitation into the volume of surface runoff by applying Equation 1 (SCS, 1972; REZENDE, 2018):

Equation 1)

$$Q = \frac{\left(P - 0,2 \left(\frac{25400}{CN} - 254 \right) \right)^2}{\left(P - 0,8 \left(\frac{25400}{CN} - 254 \right) \right)}$$

Where:

Q – Volume of rainwater runoff (mm)

P – Volume of precipitation (mm)

CN – Curve Number (dimensionless).

Given these aspects, the main objective of this study was to estimate and spatialize the values inherent to the CN parameter in different land use and land cover conditions in a watershed located in the Semiarid Region of Brazil. Specifically, the area defined for the study comprises the Riacho da Consulta watershed (Figure 1). The justification for choosing this area is based on the fact that it is a watershed that has still been studied very little, and that it is a



watershed where, although a significant part of it (83%) has natural vegetation cover (Caatinga vegetation), there is a strong presence of erosion processes, causing many of its continuous landscapes with natural vegetation cover to be degraded (SILVA, 2023).

In the Semiarid Region of Brazil, especially in the Caatinga Biogeographic System, scientific studies about the dynamics of water resources, landscapes and the processes that lead to their degradation are extremely relevant to society as a whole, given that environmental degradation in this region of Brazil is one of the main challenges to be overcome. In this perspective, it is important to consider the challenges posed by current and future global climate change scenarios, with a significant increase in areas at high risk of desertification, significant changes in the dynamics of ecosystems and ecosystem services, the impacts on the maintenance of life and biodiversity, on the economy and, consequently, on the way of life and culture, and quality of life of the human beings who inhabit this region.

2. Methodology

2.1 Study area

As mentioned above, the study area comprises the Riacho da Consulta watershed. The area is geographically located in the Caatinga Biogeographic System and the Semiarid Climate Region, Northeast Brazil, in the north-central part of the state of Bahia (Figure 1), Chapada Diamantina Complex Ecoregion, in the interior of the municipality of Miguel Calmon, where a significant part of the inhabitants (10.409 inhabitants, 39.3%) live in the rural area, and one of their main socio-economic activities is raising cattle, goats and sheep, as well as other activities related to food production and marketing (IBGE, 2022).

The Riacho da Consulta watershed covers an area of approximately 445 hectares and has an average altitude of around 624 m, with an altimetric range of 243 m. The lowest altimetric levels are 518 m, especially in the north-central part of the area, where there are areas of marshland and low waters; while the highest altitudes are above 761 m, occurring from the southern part of the watershed (Figure 1), in areas with predominantly undulating and strongly undulating terrain, to the southwest.

The average slope observed in the study area, measured as a percentage, is 16.1%, showing the occurrence of undulating reliefs. From the Pedology perspective, the study area is characterized by the predominance of Latossolos Vermelhos, comprising around 350.0 Ha of the total area of the watershed; followed by Neossolos Regolíticos, 38.0 Ha; Neossolos Flúvicos, 30.0 Ha; Neossolos Quartzarênicos, 25.0 Ha; and Organossolos Háplicos, 2.0 Ha. With regard to climatic conditions, the average annual rainfall and temperature in the region where the study area is located are 107.78 mm and 26.9 °C, respectively, showing a region where rainfall volumes are not so significant, as is observed in most of the municipalities located in the Semiarid Region of Brazil.

PUC-Campinas EESC USP Comitês PCJ

APRESENTAM:

SUSTENTARE & WIPIS2023

WORKSHOP INTERNACIONAL

SUSTENTABILIDADE, INDICADORES E GESTÃO DE RECURSOS HÍDRICOS

22/11 evento
23/11 100% online
24/11 e gratuito

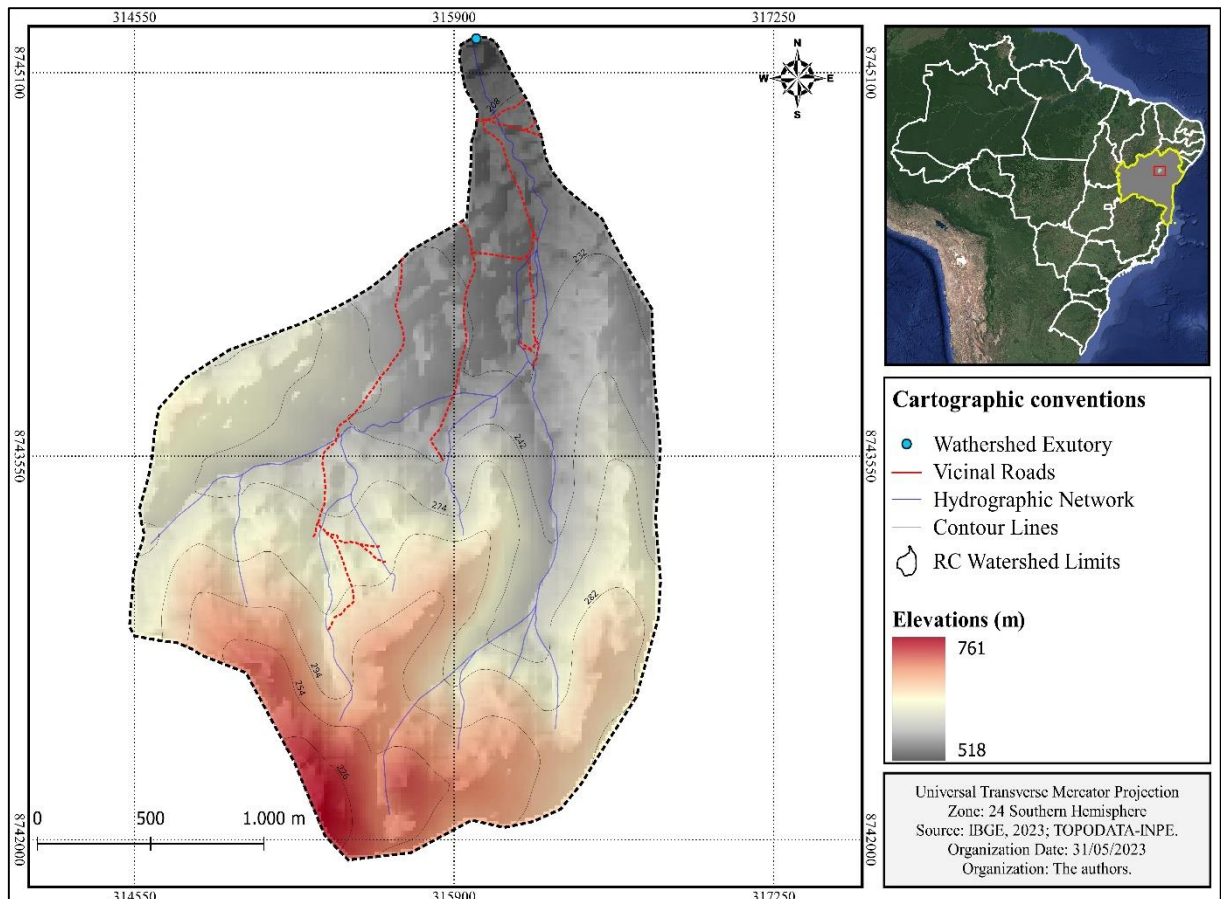


Figure 1 – Situation map of Riacho da Consulta watershed. Organization: The authors.

2.2 Theoretical and methodological approach

With regard to the theoretical and methodological framework of this study, it should be noted that the spatial data used was acquired as follows: the data relating to the pedology that occurs in the study area was collected and specialized by Silva et al.,(2023), by successive in loco activities; the Digital Elevation Model data was acquired in the website' TOPODATA – Geomorphometric Database of Brazil, within the scope of the National Institute for Space Research (INPE), with a spatial resolution of 30 m; the land use and land cover data was acquired using Digital Image Processing (DIP) from high spatial resolution (10 m) satellites, specifically, images from the Multispectral Instrument (MSI) sensor system on board the Sentinel 2. The delimitation of the Riacho da Consulta watershed and the extraction of its respective hydrographic network took place using the environment GIS (*Geographic Information System*), using the *software* QGIs, version 3.22 *Biatowieza*.

PUC-Campinas EESC USP Comitês PCJ

APRESENTAM:

SUSTENTARE & WIPIS2023

WORKSHOP INTERNACIONAL

SUSTENTABILIDADE, INDICADORES E GESTÃO DE RECURSOS HÍDRICOS

22/11 | evento
23/11 | 100% online
24/11 | e gratuito

The CN methodology, developed and presented by Soil Conservation Service, classifies soils into four (4) large groups, according to their infiltration capacity and production of surface runoff, classified as A, B, C or D, representing an increase in runoff in the same order (ANJINHO et al., 2018). The classification of the hydrological groups inherent to the soils that occur in the study area followed the guidelines described in Sartori et al., (2005), where soils belonging to hydrological group A include very deep soils (> 200 cm), with a high infiltration rate and resistance and tolerance to erosion, porous soils with a low textural gradient (<1,20), medium texture, for the most part, including well-drained soils, or excessively drained soils. In the specific case of the study area, it is observed that the latter group is mainly associated with water bodies.

Soils belonging to group B, in turn, are deep soils (100 to 200 cm), with a moderate infiltration rate, resistance and tolerance to erosion, moderately porous soils with a textural gradient varying between 1.20 and 1.50, sandy texture throughout the profile or medium texture. Group C soils are described as being deep (100 to 200 cm) or shallow (50 to 100 cm), with a low infiltration rate and low resistance to erosion. These are soils with a textural gradient greater than 1.50, mainly associated with low activity clay (Tb). Finally, soils of group D are soils with a very low infiltration rate, offering very little resistance to erosion, shallow soils (< 50 cm), shallow soils associated with abrupt textural changes, clayey soils associated with high activity clay (Ta), mostly organic soils.

In addition to the physical-structural, chemical and biological properties inherent to the soils that occur and characterize the landscape of a given region, citing the example of the area under study, as well as its relationship with the layout of the relief (slope); the coverage and use of the land and its respective spatial-temporal dynamics, also exerts a strong influence on its protection and potential for infiltration and/or surface runoff, having a direct repercussion on surface runoff (BOTELHO, 1999). In this sense, the land cover and land use data is the result of supervised classification of Sentinel 2 images, as mentioned above, dating from April and September 2021, with a Kappa coefficient of 0.92 and 0.93 for these months respectively.

It is important relevant to describe that the data describing the slope of the study area has also been incorporated into this analysis of runoff potential. According to Villela e Mattos (1975), the slope of the land it is strongly related to the occurrence of erosion processes, as it is a factor that has a direct influence on the speed at which water moves through surface runoff. In this sense, the different aspects related to physical-environmental factors in the context of the study area help to understand the environmental characteristics that characterize the respective watershed, as well as corroborating the understanding of the dynamics of land cover and land use, especially the latter. For example, Silva (2023) emphasizes that areas mapped as bare soil in the context of Riacho da Consulta watershed are strategically prioritized for the implementation of sustainable and conservationist practices, considering that these areas are the most vulnerable to desertification.

PUC-Campinas EESC USP Comitês PCJ

APRESENTAM:

SUSTENTARE & WIPIS2023

WORKSHOP INTERNACIONAL

SUSTENTABILIDADE, INDICADORES E GESTÃO DE RECURSOS HÍDRICOS

22/11 evento
23/11 100% online
24/11 e gratuito

3. Results

Based on the methodology employed, Figure 2 shows the maps for altitude, slope, land use and land cover, and the different soil classes that occur in the context of the study area, Riacho da Consulta watershed.

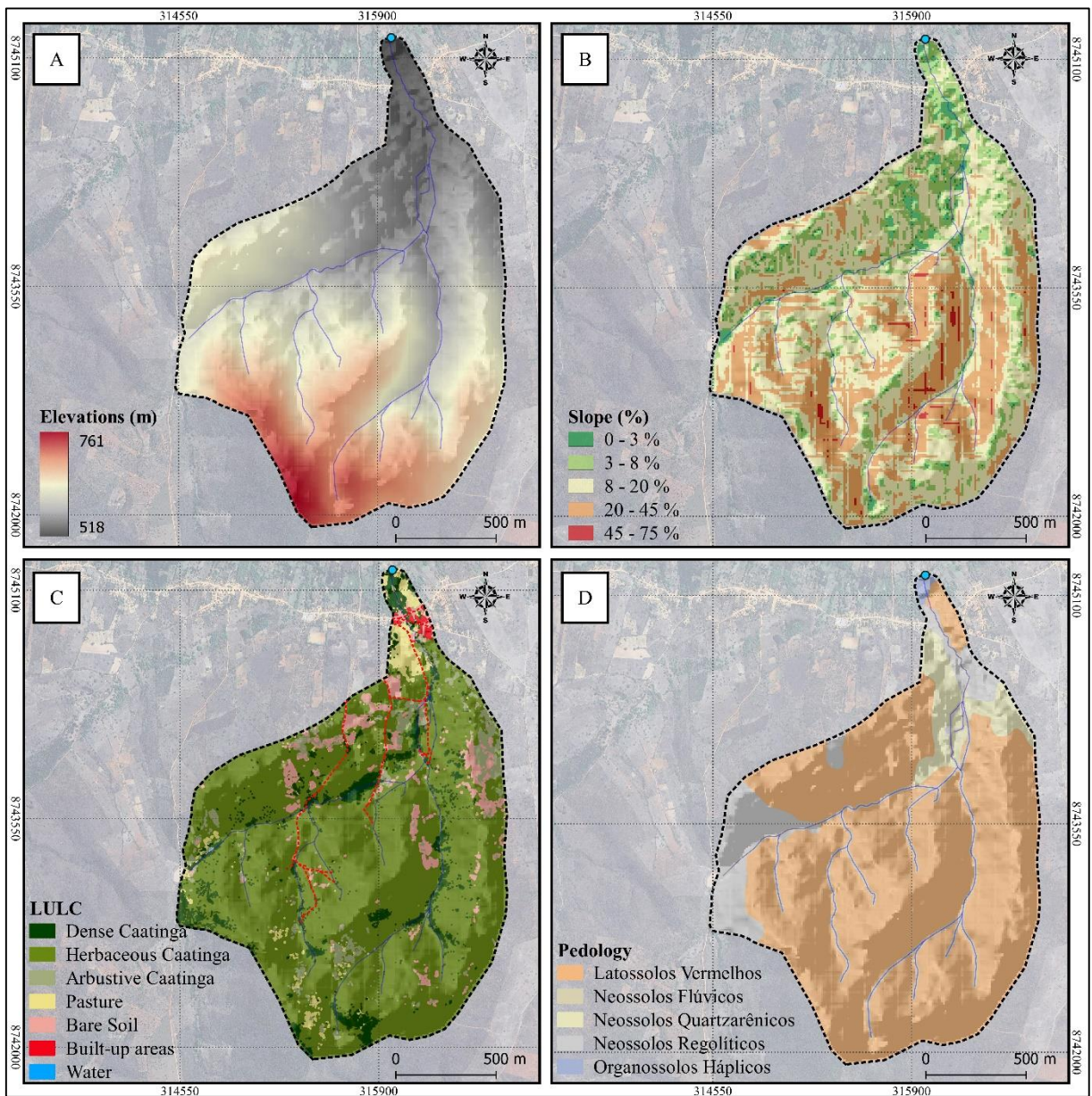


Figure 2 – A) Hipsometric, B) slope, C) land use and land cover, D) Pedology in the Riacho da Consulta watershed. Organization: The authors.



With specific regard to pedology, five (5) soil classes can be observed throughout the Riacho da Consulta watershed: Latossolos Vermelhos and Neossolos Flúvicos, both classified in hydrological group B, totaling approximately 380 hectares, 85% of the watershed's total area; Organossolos Háplicos, classified in hydrological group C, comprising around 1.84 hectares, 0.4% of the study area; Neossolos Regolíticos and Neossolos Quartzarênicos, falling into hydrological group D, occupying around 62.73 hectares, 14.6% of the total area of the Riacho da Consulta watershed.

It can be seen that most of the study area (78.6%) is characterized, pedologically, by the occurrence of: Latossolos Vermelhos, well-developed, deep and drained soils; Neossolos Regolíticos (8.6%), especially in the north and west, these soils are poorly developed, sandy in texture and highly erodible; followed by the Neossolos Flúvicos (6.8%), associated mainly with valley bottoms and intermittent streams, areas that have moderate and/or high availability of water in the soil during most of the year (soil moisture), consequently showing areas covered in tree-sized vegetation, with species typical and/or common in dense Caatinga phytophysionomies; Neossolos Quartzarênicos (5.5%), these soils are also poorly developed and sandy; and finally the Organossolos Háplicos (0.4%), occurring in the form of a discontinuous patch in the extreme north of the study area, associated with the floodplain area.

The mapping of land use and land cover (Figure 2) shows the different aspects inherent to natural and anthropogenic factors on a landscape scale in the Riacho da Consulta watershed. Land cover conditions are evidenced by the occurrence of the different phytophysionomies characteristic of the Caatinga's natural vegetation cover. Specifically considering the Dense Caatinga phytophysionomies, which comprise only 5.1% of the watershed's total area, it can be seen that these are mostly associated with valley bottom areas, occurring mainly in the central portion of the watershed, areas whose hypsometric classes vary between 518 and 609 meters in altitude, where one can also observe the fragmentation of continuous landscapes with natural vegetation cover for land use by pasture land.

Areas covered by Caatinga Herbaceous and Caatinga Arbustiva phytophysionomies occupy around 84.0% and 4.3%, respectively, of the watershed, with the latter (Caatinga Arbustiva phytophysionomies) contrasting most with areas of exposed soil, which comprise 3.4% of the study area, mainly associated with Latosols on gently undulating reliefs. From the terrain slope map in the context of the study area, it can be seen that the average slope observed is 16.1%, characterizing undulating reliefs. According to Silva (2023), the Riacho da Consulta watershed is highly susceptible to erosion processes, and the areas with undulating (8-20%), strongly undulating (20-45%) and mountainous (45-75%) reliefs comprise areas with restricted use by human activities, and need to be effectively earmarked for the conservation of fauna and flora in the context of the study area.

PUC-Campinas EESC USP Comitês PCJ

APRESENTAM:

SUSTENTARE & WIPIS2023

WORKSHOP INTERNACIONAL

SUSTENTABILIDADE, INDICADORES E GESTÃO DE RECURSOS HÍDRICOS



22/11 evento
23/11 100% online
24/11 e gratuito

Figure 3 shows the spatialization of CN in the study area. As can be seen, areas with high CN values predominate, showing a watershed with high runoff potential and low infiltration capacity.

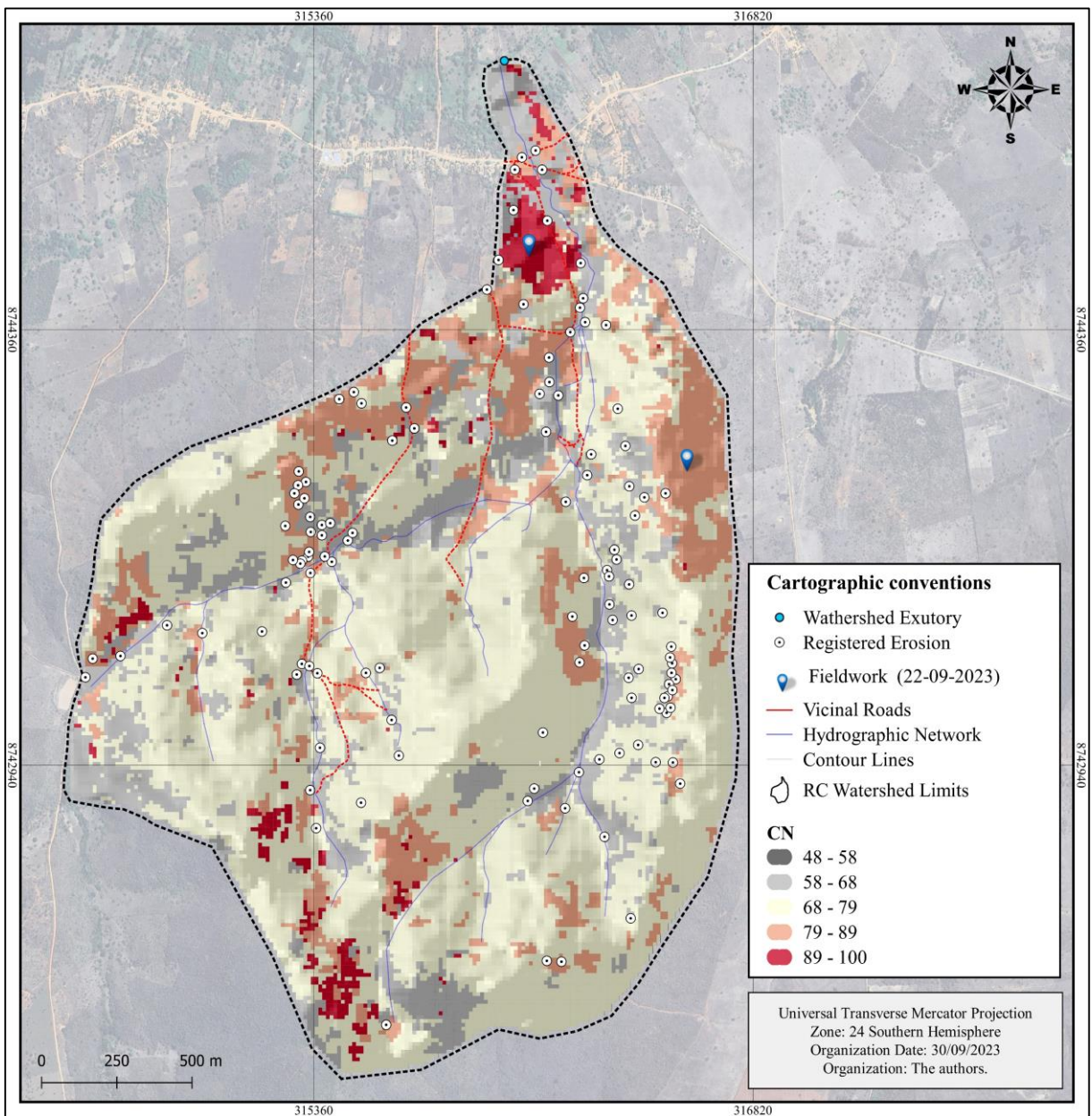


Figure 3 – Curve Nuber spatialization in the Riacho da Consulta watershed.
Organization: The authors.

PUC-Campinas EESC USP Comitês PCJ

APRESENTAM:

SUSTENTARE & WIPIS2023

WORKSHOP INTERNACIONAL

SUSTENTABILIDADE, INDICADORES E GESTÃO DE RECURSOS HÍDRICOS



22/11 evento
23/11 100% online
24/11 e gratuito

Figure 3 shows the CN values spatialized in the Riacho da Consulta watershed. The average NC observed for the entire study area was 79, showing that the Riacho da Consulta watershed has high runoff conditions. Specifically, it can be seen that the predominance of areas with high CV values occurs spatially throughout the watershed, mainly in its northern and northeastern and southwestern portions, respectively. As shown in Figure 3, from fieldwork carried out on September 22nd (09) of the year 2023, Figure 4 shows a record of the landscape in an area with high runoff potential, located in the northeastern portion of the study area.



Figure 4 – Recording the landscape in an area with high runoff potential in the Riacho da Consulta watershed. Organization: SILVA, Izaías de Souza (22-09-2023).

As can be seen (Figure 4), this is an area in an advanced stage of soil degradation (Red Latosol), located in the interfluvium to the northeast of the watershed. Although this area has these conditions, it is important to note that, during the dry season (July to November), it is often used for grazing by livestock farmers, due to the fact that pasture areas in the region are practically exhausted by this time. It is important to understand that, this practice further accelerates the process of soil degradation in these areas and, as Silva (2023) proposes, these areas are more suitable, from a land use perspective, for biodiversity conservation.

PUC-Campinas EESC USP Comitês PCJ

APRESENTAM:

SUSTENTARE & WIPIS2023

WORKSHOP INTERNACIONAL

SUSTENTABILIDADE, INDICADORES E GESTÃO DE RECURSOS HÍDRICOS



22/11 evento
23/11 100% online
24/11 e gratuito

Figure 5, which is also the result of fieldwork carried out on September 22nd (09) 2023, shows a second record of the landscape in another area that also showed high runoff potential, located in the northern portion of the Riacho da Consulta watershed. Similarly to what was observed in Figure 4, the landscape in question (Figure 5) shows that land use is geared towards agricultural activities, with degraded pastures and an almost overwhelming presence of species commonly found in environments covered with shrubby Caatinga. The preferential corridors commonly seen in cattle, goat and sheep grazing areas can be seen, highlighting the process of soil compaction, a process which directly limits the infiltration of rainwater and increases the potential for surface runoff. Thus, in both landscapes visited through fieldwork, comprising areas with high runoff potential, human interventions in ecosystems were identified.



Figure 5 – Recording the landscape in an area with high runoff potential in the Riacho da Consulta watershed. Organization: SILVA, Izaias de Souza (22-09-2023).

4. Conclusions

By estimating and spatializing the values inherent in the CN parameter, an analysis was carried out of the potential runoff conditions in the Riacho da Consulta watershed, considering different land cover and land use conditions. The average CN value observed for the entire

PUC-Campinas EESC USP Comitês PCJ

APRESENTAM:

SUSTENTARE & WIPIS2023

WORKSHOP INTERNACIONAL

SUSTENTABILIDADE, INDICADORES E GESTÃO DE RECURSOS HÍDRICOS

22/11 | evento
23/11 | 100% online
24/11 | e gratuito

watershed was 79, showing that the potential for surface runoff in the Riacho da Consulta watershed is high. On the other hand, it shows that the Riacho da Consulta watershed has significant restrictions in terms of water infiltration into the soil, which can trigger other processes that impact the soil, water resources, biodiversity, ecosystem services and the culture of the inhabitants who have historically had links with the area. Furthermore, it is understood that the absence of conservation practices in the watershed can accentuate the challenges related to erosion processes (SILVA, 2023), for example, with the consequent loss of soil and silting up of its water resources.

About the potential for surface runoff in relation to the dynamics of land use and land cover conditions, this study showed that land use areas have higher CN values than land cover areas, thus demonstrating a high potential for surface runoff in the former and a low potential for surface runoff in the latter, even though the conditions and properties of the soils in the areas where the latter occur are not favorable to infiltration. In this sense, it is important to carry out field work to validate the results and, above all, the processes that help to understand and explain the high runoff potential in the study area. It also highlights the importance of implementing conservation practices in the context of the Riacho da Consulta watershed and, above all, practices aimed at proper soil management, especially in areas used for agricultural activities.

It is hoped that future studies will contribute to soil loss in the Riacho da Consulta watershed. Similarly, other studies should investigate the importance of forest fragments for the implementation of an ecological corridor in the context of the watershed in question. The results found, presented and discussed within the scope of this study can support the formulation and implementation of public policies with an emphasis on conservation practices in the context of the area under study, for example, supporting the definition of areas of restricted use by human activities in the Riacho da Consulta watershed.

5. Referências bibliográficas

ANJINHO, P. S.; BARBOSA, M. A. G. A.; SANTOS, A. R.; MAUAD, F. F. Espacialização do parâmetro curve number (CN) na bacia hidrográfica do ribeirão do lobo para o período de 1985 e 2017. In: XVI Simpósio do programa de pós-graduação em Ciências da engenharia ambiental, 2018, São Carlos. **Anais ...** São Paulo: PPG-SEA, 2018. 12 p.

ARAÚJO NETO, J. R.; PALÁCIO, H.; ANDRADE, E.; SANTOS, J.; PINHEIRO, E. Otimização do número de curva (CN-SCS) para diferentes manejos na região semiárida, Ceará, Brasil. **Irriga**, Botucatu, Edição Especial, p. 264 - 279, 2012.

AVANZI, J. C; BORGES, L. A. C; CARVALHO, R. Proteção legal do solo e dos recursos hídricos no Brasil. **Revista em Agronegócios e Meio Ambiente**, v. 2, n. 2, p. 115-128, 2009.



BOTELHO, R. G. M. Planejamento ambiental em microbacias hidrográficas In: **Erosão e Conservação dos Solos: Conceitos, Temas e Aplicações**. (Orgs.). Guerra AJT, Silva AS, Botelho RGM, Rio de Janeiro: Bertrand Brasil, 1999.

CARVALHO, F.; RODRIGUES, S. C. Método curve number – pesquisas e discussões dos parâmetros valor CN e abstração inicial. **Geografia Ensino & Pesquisa**, v. 25, p. 1-50, 2021.

HAWKINS, R. H. Asymptotic determination of curve numbers from data. **Journal of Irrigation and Drainage Engineers**, v. 119, n. 2, p. 334-345, 1993.

Instituto Brasileiro de Geografia e Estatística (**IBGE**). Disponível em: <https://sibra.ibge.gov.br/Tabela/1612#resultado>. Acesso em: 12 Mai. 2022.

LAL, M.; MISHRA, S. K.; KUMAR, M. Reverification of antecedent moisture condition dependent runoff curve number formulae using experimental data of Indian watersheds. **CATENA**, v. 173, p. 48–58, 2019.

OLIVEIRA, U. C.; COSTA FILHO, E. H.; MAIA, A. M.; ALBUQUERQUE, C. C.; MENDONÇA, P. S.; XAVIER, N. P.; CIDRAL, W. R. S.; MENEZES, W. D. S.; SILVA, I. S.; MENDES JUNIOR, C. A. análise comparativa e espacialização do parâmetro CN (Curve Number) na bacia hidrográfica do Rio Itacolomi, Ceará, entre os anos de 1990, 2005 e 2020. In: PANIAGUA, C. E. S. (org.). **Engenharia sanitária e ambiental: recursos hídricos e tratamento de água**. 1ª ed. Ponta Grossa - PR: Atena, 2022. 158p.

REZENDE, V. S.; RIBEIRO, V. O.; MENDES, Y. S. Determinação dos valores de número de deflúvio (CN) para o perímetro urbano de Dourados-MS. In 7º Simpósio de Geotecnologias no Pantanal, **Anais ... Jardim, MS**, 20 a 24 de outubro 2018, Embrapa Informática Agropecuária/INPE, p. 230- 239.

SANTOS, C. A. G; VAJAPAYAM, R. M. S.; SRINIVASAN, S. Análise das perdas de água e solo em diferentes coberturas superficiais no semiárido da Paraíba. **Revista OKARA: Geografia em debate**, v. 1, n. 1, p. 1-152, 2007.

SARTORI, A.; LOMBARDI NETO, F.; GENOVEZ, A. M. Classificação Hidrológica de Solos Brasileiros para Estimativa da Chuva Excedente com o Método do Serviço de Conservação do Solo dos Estados Unidos Parte 1: Classificação. **Revista Brasileira de Recursos Hídricos**, v. 10, n. 40, p. 5-18, 2005.

SILVA, I. S.; Mapeamento da cobertura e uso da terra nos domínios da Caatinga: contribuições na análise dos processos que atuam na sua degradação. In: CONGRESSO NACIONAL DE



PRÁTICAS INTERDISCIPLINARES E SUSTENTABILIDADE – CONPIS, 2023, São Paulo. **Anais ...** Rua Silva Jardim, 1329 – Parque Industrial: Reconecta, 2023. p. 102-110. Available in: https://www.reconectasolucoes.com.br/files/ugd/db03c2_599fc46452e34cd688a4a1949f221a5a.pdf. Access in: Jul. 2023.

SILVA, I. S. As paisagens da Caatinga e o seu lento e contínuo processo de degradação pelos processos erosivos: um estudo de caso na bacia hidrográfica do Riacho da Consulta, Bahia, Brasil. In: 12º SIMPOSIO DE GESTÃO AMBIENTAL E BIODIVERSIDADE – SIGABI, 2023, Rio de Janeiro. **Anais ...** Três Rios, Rio de Janeiro, 2023. p. 22-33. Available in: <https://www.even3.com.br/12sigabi/>. Access in: Sep. 2023.

SOIL CONSERVATION SERVICE (SCS). National Engineering Handbook – NEH, Section 4: Hydrology. Department of Agriculture, Washington DC, 1972. 762 p.

VILLELA, S.M., MATTOS, A. **A Hidrologia aplicada**. São Paulo: McGraw-Hill do Brasil, 1975. 245p.